

# Declaration of PDA-associated development for Queen's Wharf Brisbane Priority Development Area

QWB – 2017-1

**Description of the land on which the development is proposed to be located:**

Area A is located on land adjacent to the PDA boundary at the corner of Queen and George Street, across William Street and Queens Wharf Road, down to the foreshore area beneath Queens Wharf Road to Victoria Bridge and the Brisbane River, more properly described as part of Queen Street, part of unallocated State land (part of the Brisbane River) and part of Lot 533 on SP231897 (part of the Riverside Expressway), as depicted in **Figure 1**.

See details in **Attachment 1** (QWB – 2017-1) for figures.

**Description of the development:**

Area A: Queen Street public realm and water connection services work development is described as public realm improvement work including footpath works, landscape works, roadworks, foreshore improvements, associated ancillary works, and water connection services work, generally in accordance with **Figures 2, 3 and 4** which may involve material change of use, operational work, building work and reconfiguring a lot.

See details in **Attachment 1** (QWB – 2017-1) for figures.

**Type of development:**

Area A: PDA-assessable development.

Declared under section 40C of the *Economic Development Act 2012 (QLD)* by the Minister for Economic Development Queensland in the presence of:

Signature:



Date: 12/3/17

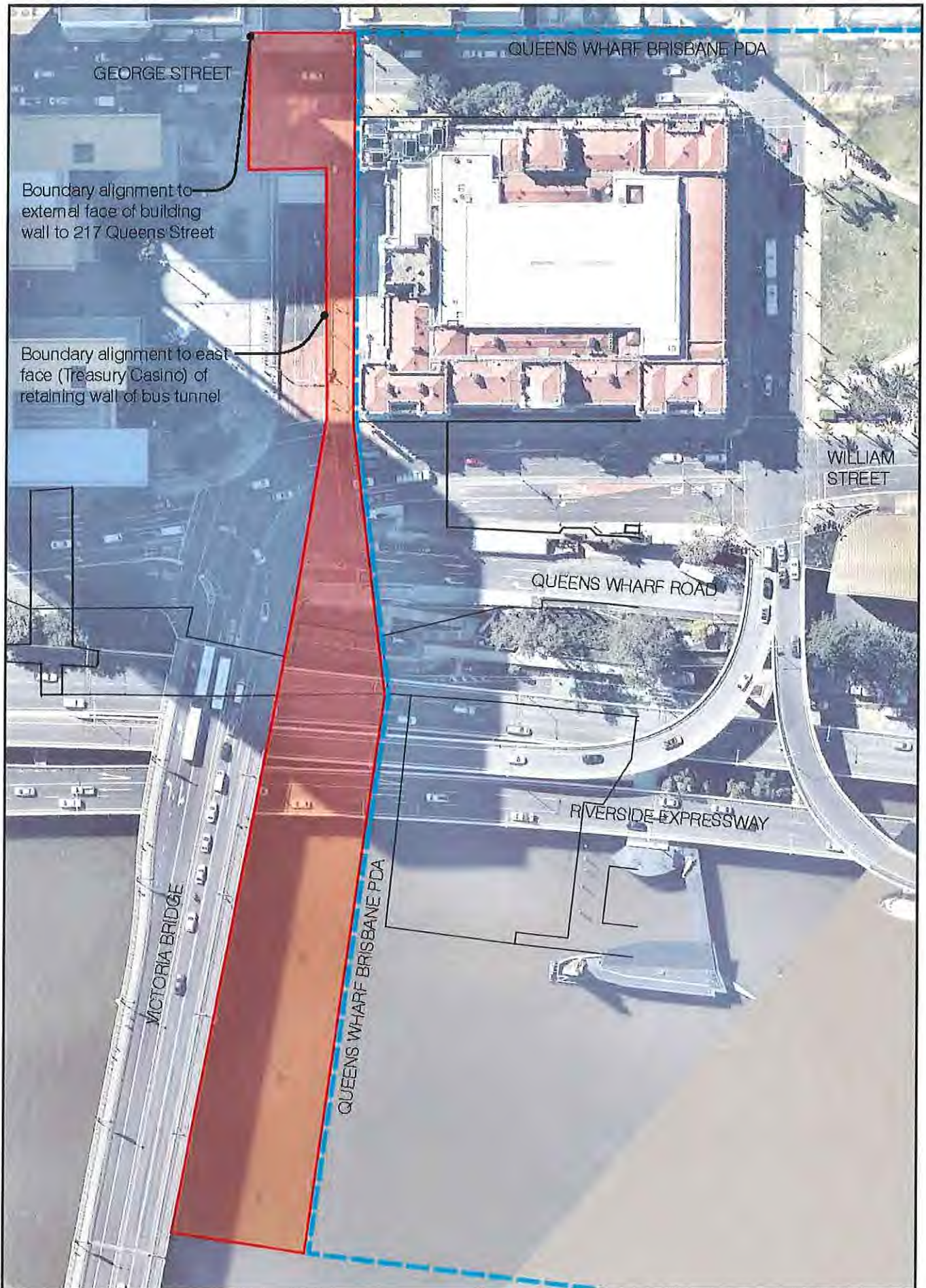
Signature:



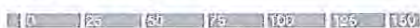
Date: 12/03/17

Honourable Jacklyn Trad, Minister for Transport, Minister for Infrastructure and Planning, as the corporation sole known as the Minister for Economic Development Queensland, constituted by section 8 of the *Economic Development Act 2012 (Qld)*

## **Attachment 1 (QWB – 2017-1)**



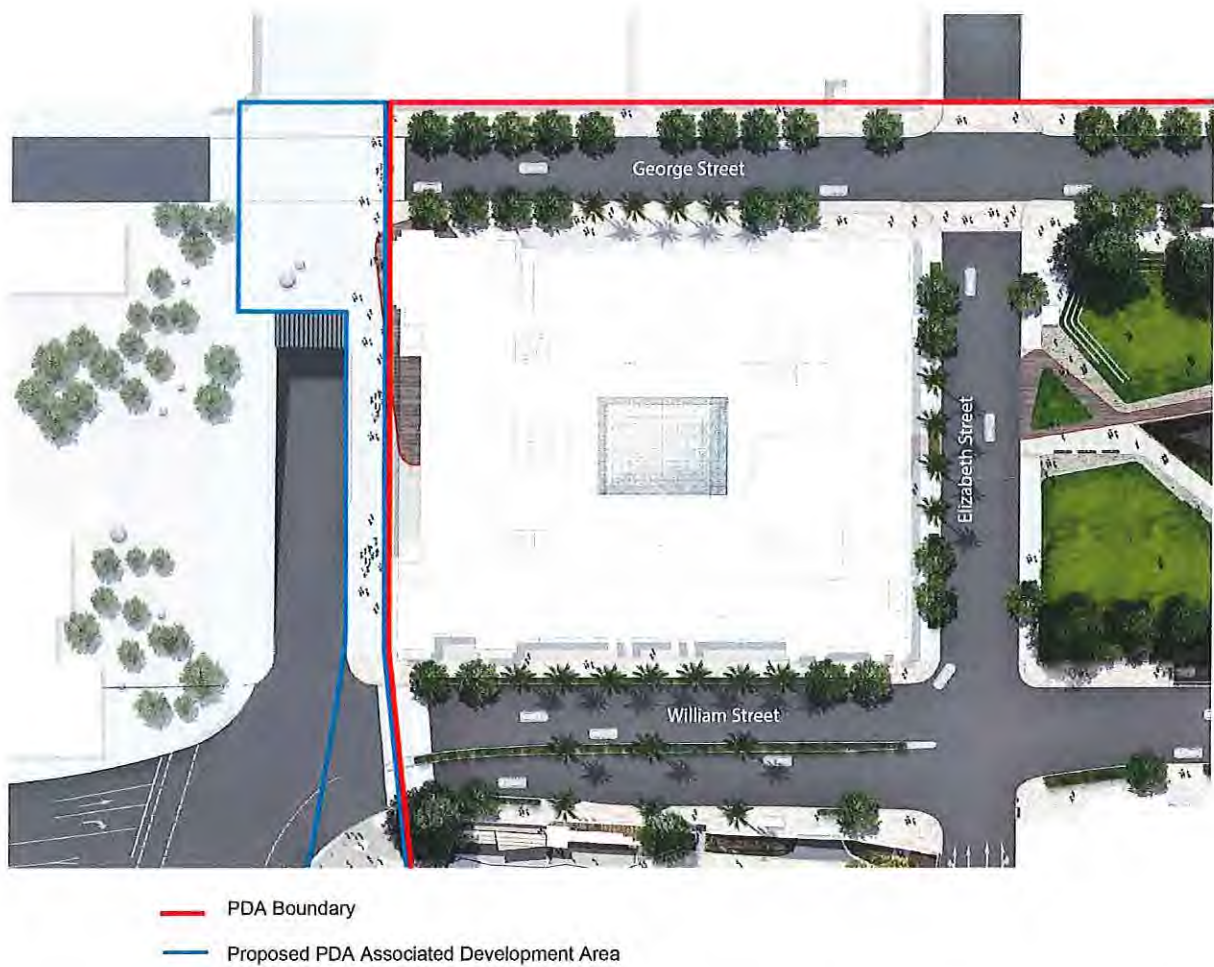
SCALE 1:3000 @ A4



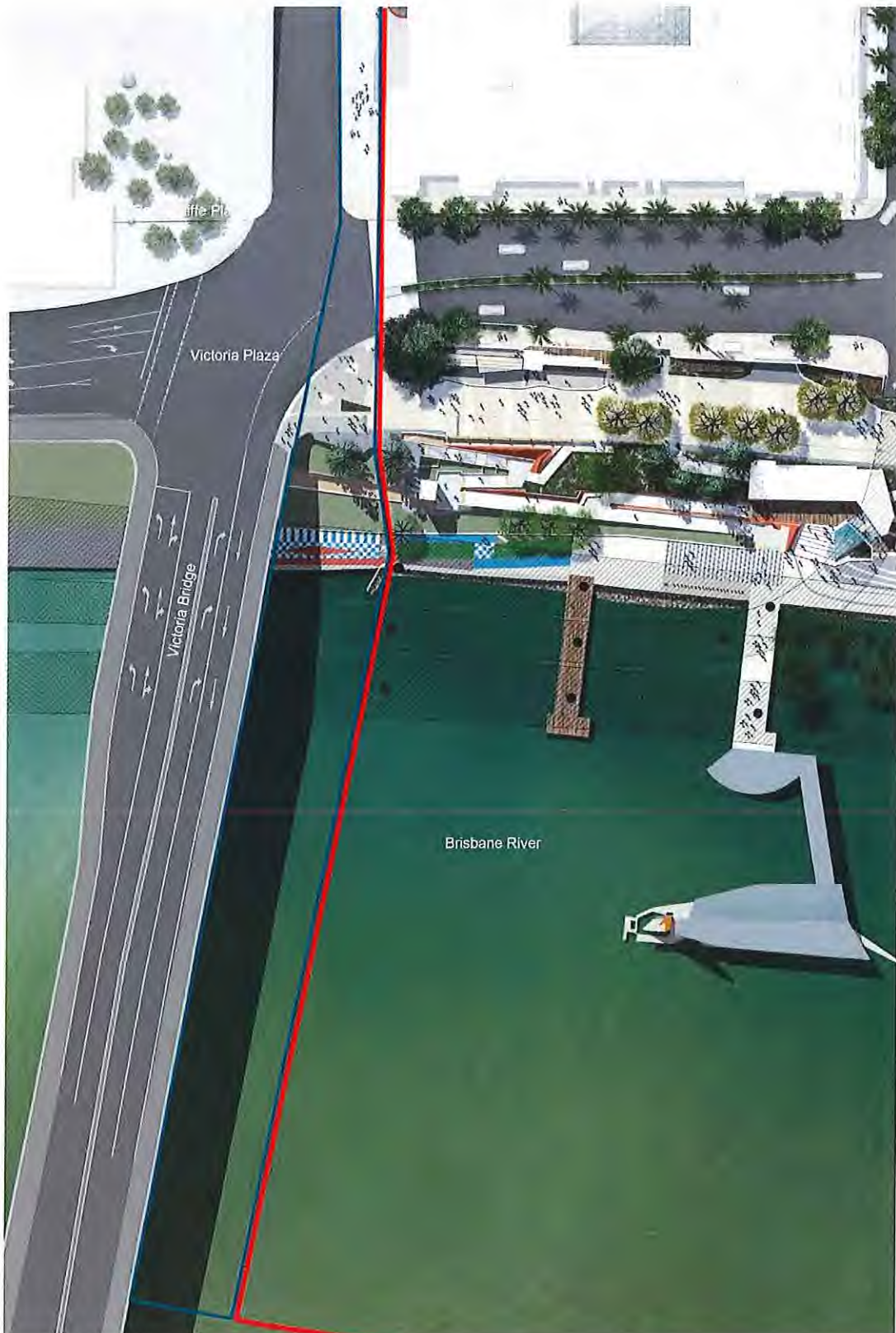
PDA Associated Development : Area A -  
Queen Street Interface

**Figure 1: Area A—Extent of land within Area A**

Source: Destination Brisbane Consortium Integrated Resort Operations Pty Ltd

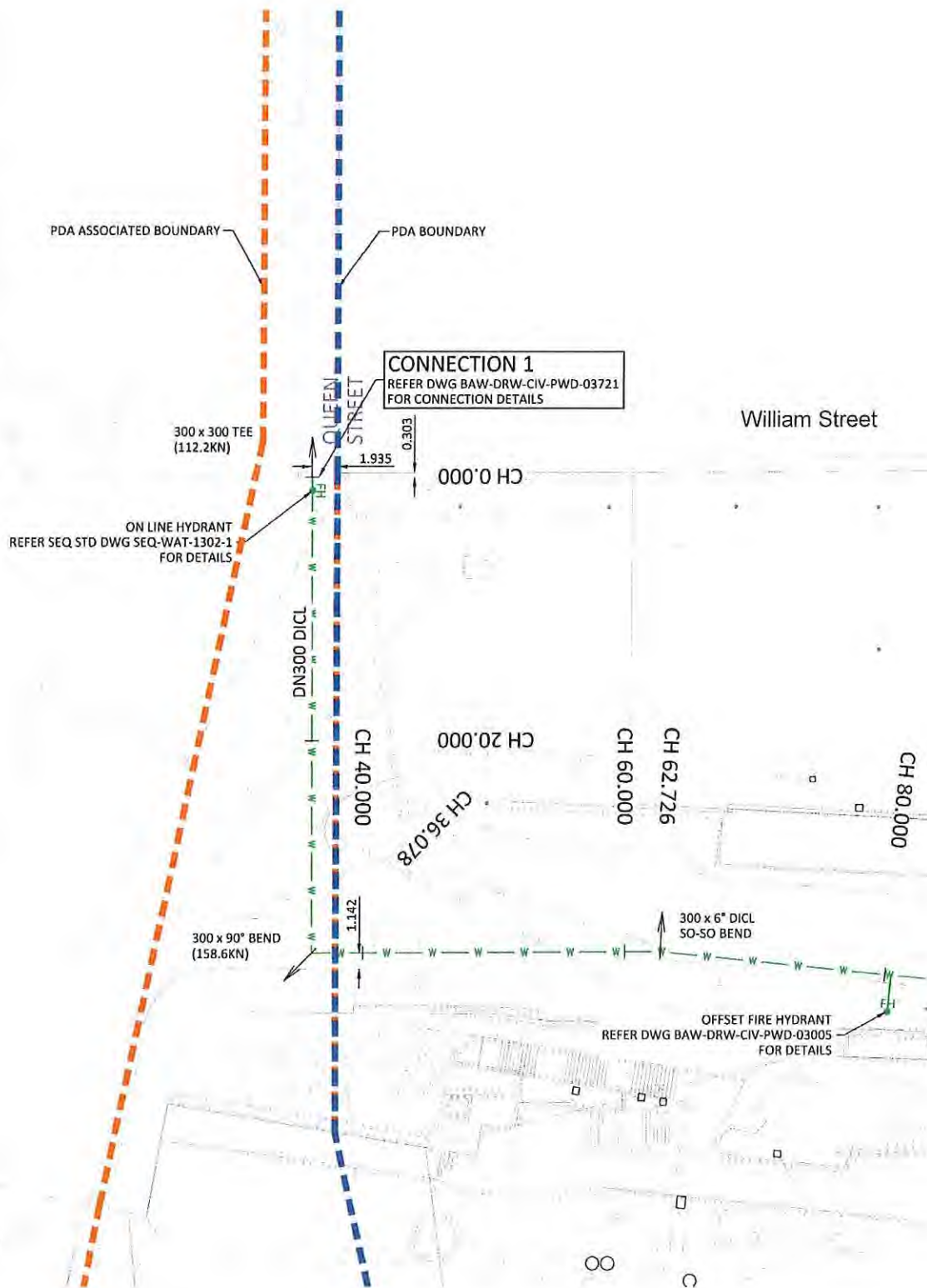


**Figure 2: Area A—Proposed Queen Street interface public realm work** (illustrating the development in the northern part of Area A)  
Source: Destination Brisbane Consortium Integrated Resort Operations Pty Ltd



- PDA Boundary
- Proposed PDA Associated Development Area

**Figure 3: Area A—Proposed Queen Street interface public realm work** (illustrating the development in the southern part of Area A)  
Source: Destination Brisbane Consortium Integrated Resort Operations Pty Ltd



**Figure 4: Area A—Proposed water connection services work** (illustrating the development in the southern part of Area A)

Source: Destination Brisbane Consortium Integrated Resort Operations Pty Ltd