

# Declaration of PDA-associated development for Queen's Wharf Brisbane Priority Development Area

QWB – 2017-2

**Description of the land on which the development is proposed to be located:**

Area B is located on land from the middle of the Brisbane River (at the edge of the QWB PDA) to a landing point in the South Bank Parklands, more properly described as part of unallocated State land (part of the Brisbane River), Lot A on AP22187 (part of the Brisbane River – Russell Street pontoon), part of Lot 902 on CP839764 (part of the Clem Jones Promenade and the Brisbane River adjacent to the ferry terminal), part of Lot 934 on SP251794 (South Bank Parklands) and part of unallocated State land (part of the Brisbane River), as depicted in **Figure 1**.

See details in **Attachment 1** (QWB – 2017-2) for figures.

**Description of the development:**

Area B: Pedestrian bridge (part of the total bridge span) development is described as part of a pedestrian bridge spanning the Brisbane River and landing in the South Bank Parklands, including establishment of a food and drink outlet on the bridge deck and associated ancillary works, generally in accordance with **Figures 2 to 5**, which may involve material change of use, building work, operational work and reconfiguring a lot.

See details in **Attachment 1** (QWB – 2017-2) for figures.

**Type of development:**

Area B: PDA-assessable development.

Declared under section 40C of the *Economic Development Act 2012 (QLD)* by the Minister for Economic Development Queensland in the presence of:

Signature:



Date:

12/3/17

Signature:

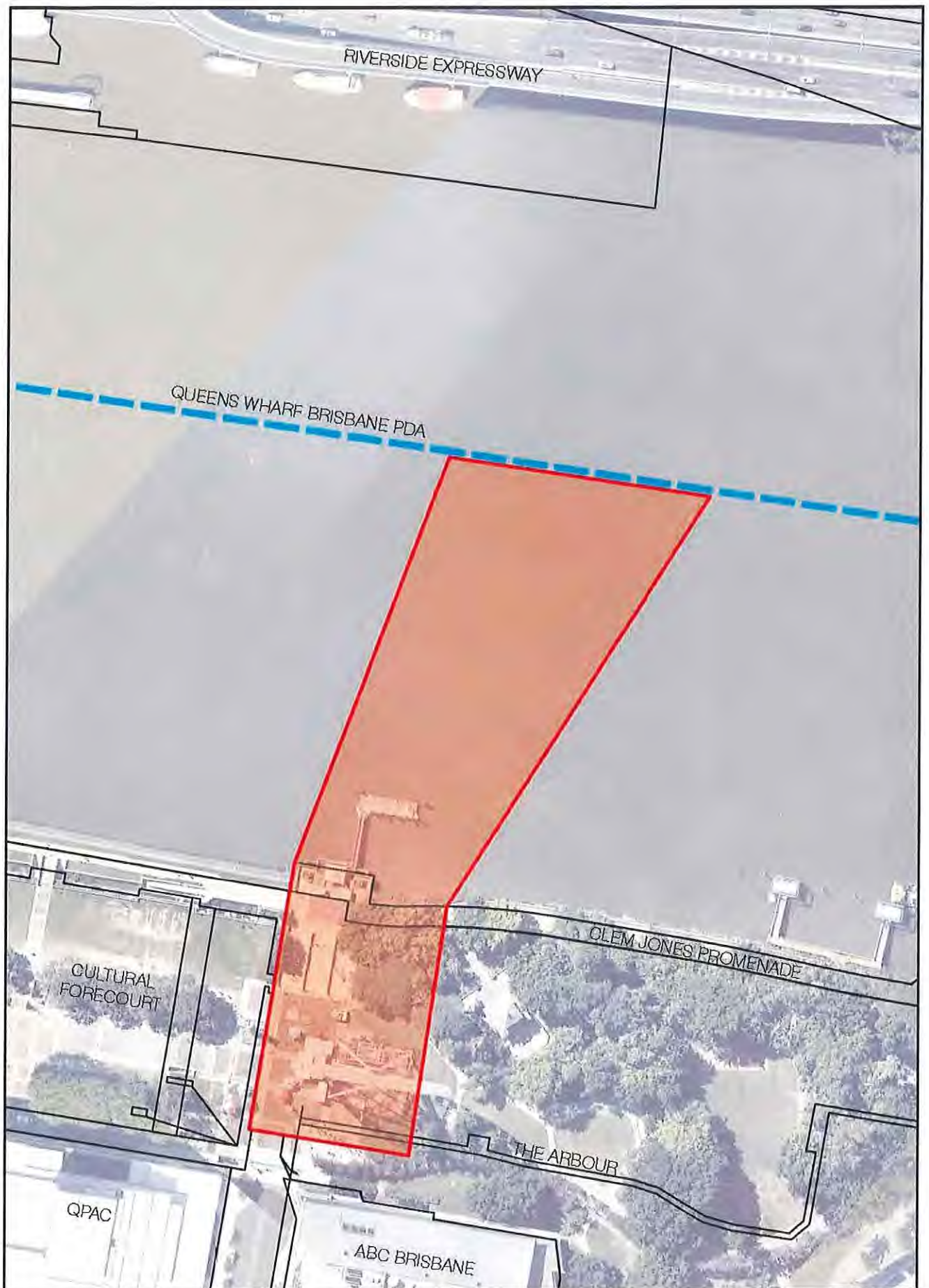


Date:

12/03/17

Honourable Jacklyn Trad, Minister for Transport, Minister for Infrastructure and Planning, as the corporation sole known as the Minister for Economic Development Queensland, constituted by section 8 of the *Economic Development Act 2012 (Qld)*

## **Attachment 1 (QWB – 2017-2)**



SCALE 1:2000 @ A4



PDA Associated Development : Area B -  
Pedestrian Bridge

**Figure 1: Area B—Extent of land within Area B**

Source: Destination Brisbane Consortium Integrated Resort Operations Pty Ltd



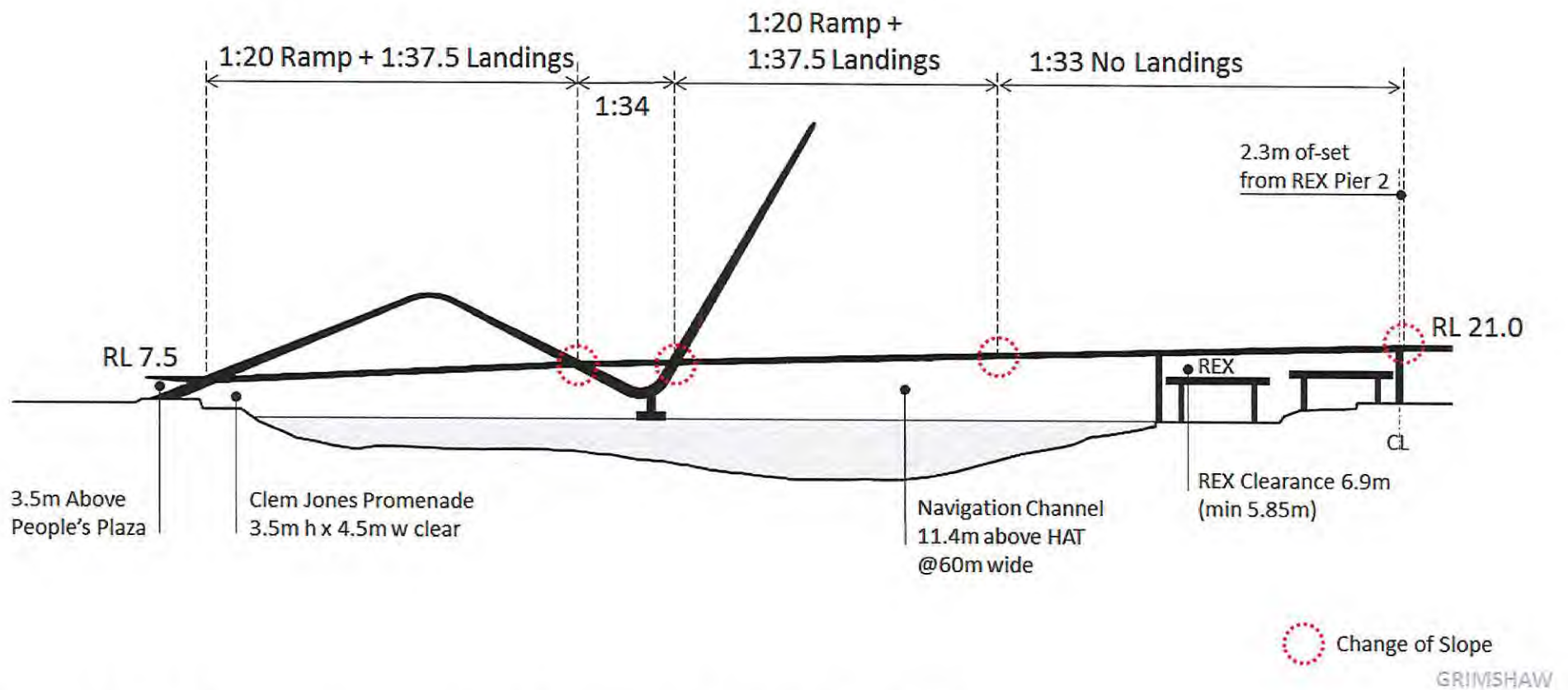
**Figure 2: Area B—Proposed pedestrian bridge (artist's impression looking from South Bank Parklands to Queen's Wharf)**

Source: Destination Brisbane Consortium Integrated Resort Operations Pty Ltd



**Figure 3: Area B—Proposed pedestrian bridge (artist's impression looking from South Bank Parklands to Queen's Wharf)**

Source: Destination Brisbane Consortium Integrated Resort Operations Pty Ltd



**Figure 4: Area B—Proposed pedestrian bridge (diagrammatic longitudinal section)**

Source: Destination Brisbane Consortium Integrated Resort Operations Pty Ltd

